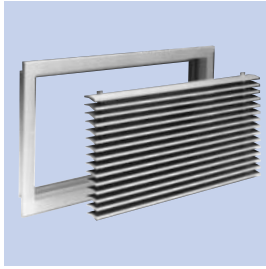




Reversible Core Grilles (R)RTC 2(R)RTC



Please refer to page 2 for symbols used, definitions and criteria.

Selection Example RTC-6/425x125

Spread 0°
Air Volume 83 l/s
Throw 4.7 m
Pressure Drop 5 Pa
Noise Level NR 13

Note!

Maximum Throws in the following tables are for an a terminal air velocity of 0.15m/s within the comfort zone.

Performance Table

RTC-6 2RTC-6		Supply																						
		325x125		425x125		525x125		625x125		425x225		525x225		625x225		825x225		625x325		825x325				
m ³ /h	l/s		0°	30°	0°	30°	0°	30°	0°	30°	0°	30°	0°	30°	0°	30°	0°	30°	0°	30°	0°	30°		
100	28	T	2.9	2.3																				
		Ps	1	2																				
		Lp	-	-																				
150	42	T	3.4	2.6	3.1	2.1																		
		Ps	2	3	1	2																		
		Lp	-	-	-	-																		
200	56	T	4.5	3.4	3.9	2.9	3.5	2.7	3.2	2.4														
		Ps	4	6	2	3	1	3	1	2														
		Lp	-	-	-	-	-	-	-	-														
300	83	T	5.5	4.3	4.7	3.6	4.2	3.2	3.8	3.0	3.5	2.8												
		Ps	10	15	5	8	3	4	2	3	1	2												
		Lp	19	24	13	17	-	-	-	-	-	-												
400	111	T	8.2	6.9	7.3	5.7	6.3	5.0	5.6	4.3	5.0	4.1	4.6	3.6										
		Ps	17	25	10	15	5	8	4	6	2	4	1	2										
		Lp	25	31	20	25	15	20	12	16	-	-	-	-										
500	139	T			8.2	6.7	7.4	6.1	6.8	5.5	6.3	5.0	5.5	4.3	4.8	3.8								
		Ps			16	25	10	14	7	10	3	6	2	3	1	2								
		Lp			25	30	21	25	17	22	-	16	-	-	-	-								
600	167	T					9.4	7.8	8.6	6.8	7.4	5.8	6.4	5.4	5.9	4.8	5.5	4.5						
		Ps					15	23	11	19	6	8	3	5	2	3	1	2						
		Lp					26	31	22	27	15	20	-	14	-	-	-	-						
750	208	T							11.1	9.1	9.8	7.6	8.2	6.6	7.5	6.0	6.7	5.3	6.0	5.0				
		Ps								18	26	8	13	5	8	3	5	2	3	1	2			
		Lp								28	33	21	25	17	22	13	17	-	-	-	-			
1000	278	T										13.4	10.6	11.3	9.2	10.1	8.0	8.9	7.1	7.9	6.3	6.7	5.3	
		Ps											16	25	10	15	7	10	3	5	2	3	1	2
		Lp											28	33	23	28	19	24	12	17	-	14	-	-
1250	347	T												14.8	12.0	12.9	10.2	11.3	9.4	10.5	8.1	8.9	7.3	
		Ps													16	24	10	15	4	7	3	5	2	3
		Lp													29	34	24	29	18	22	15	20	-	-
1500	417	T															17.0	13.5	14.4	12.0	13.0	10.4	11.4	9.1
		Ps															17	25	9	12	6	10	4	6
		Lp															30	35	23	28	21	26	13	19
2000	556	T																18.0	15.1	17.1	13.4	14.5	11.7	
		Ps																16	24	11	16	6	10	
		Lp																31	35	28	33	22	27	
2500	694	T																		20.5	16.9	17.4	14.1	
		Ps																		14	22	10	15	
		Lp																		35	40	28	32	
3000	833	T																				20.5	16.8	
		Ps																				16	25	
		Lp																				34	39	

Reversible Core Grilles

(R)RTC 2(R)RTC



Selection Example

2RRTC-6/825x75

Spread 0°

Air Volume 83 l/s

Throw 4.7 m

Pressure Drop 5 Pa

Noise Level NR 13

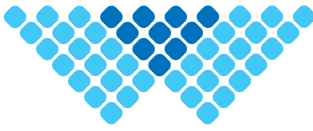
Ceiling Height Throw Correction Factors

Ceiling Height (m)	2.5	2.7	3.0	3.5
Maximum Throw (m)	2.5	3.3	4.5	6.3

Performance Table Nom. H = 75mm

Suitable for round ducts ø150 up to ø400

RRTC-6 2RRTC-6		Supply / Exhaust														
		325 x 75		425 x 75		525 x 75		625 x 75		825 x 75		1025 x 75		1225 x 75		
m ³ /h	l/s	0°	30°	0°	30°	0°	30°	0°	30°	0°	30°	0°	30°	0°	30°	
100	28	T	3.6	2.8	3.4	2.7	3.2	2.5	2.9	2.3						
		P _s	4	6	2	3	1	3	1	2						
		L _p	-	-	-	-	-	-	-	-						
150	42	T	4.1	3.3	3.9	3.1	3.7	2.9	3.4	2.6	3.1	2.1				
		P _s	11	16	6	9	3	5	2	3	1	2				
		L _p	19	24	11	14	-	-	-	-	-	-				
200	56	T	6.0	4.7	5.3	4.2	4.9	3.9	4.5	3.4	3.9	2.9	3.5	2.7	3.2	2.4
		P _s	19	27	11	16	7	10	4	6	2	3	1	3	1	2
		L _p	26	32	19	24	13	16	-	-	-	-	-	-	-	-
300	83	T			6.5	5.1	5.9	4.6	5.5	4.3	4.7	3.6	4.2	3.2	3.8	3.0
		P _s			24	32	15	21	10	15	5	8	3	4	2	3
		L _p			32	38	23	29	19	24	13	17	-	-	-	-
400	111	T							8.2	6.9	7.3	5.7	6.3	5.0	5.6	4.3
		P _s							17	25	10	15	5	8	4	6
		L _p							25	31	20	25	15	20	12	16
500	139	T									8.2	6.7	7.4	6.1	6.8	5.5
		P _s									16	25	10	14	7	10
		L _p									25	30	21	25	17	22
600	167	T											9.4	7.8	8.6	6.8
		P _s											15	23	11	19
		L _p											26	31	22	27
750	208	T													11.1	9.1
		P _s													18	26
		L _p													28	33



Reversible Core Grilles (R)RTC 2(R)RTC

Ceiling Height Throw Correction Factors

Ceiling Height (m)	2.5	2.7	3.0	3.5
Maximum Throw (m)	2.5	3.3	4.5	6.3

Selection Example 2RRTC-6/425x125

Spread 0°
Air Volume 83 l/s
Throw 4.7 m
Pressure Drop 5 Pa
Noise Level NR 13

Performance Table Nom. H = 125mm Suitable for round ducts ø300 up to ø900

RRTC-6 2RRTC-6		Supply / Exhaust															
		325 x 125		425 x 125		525 x 125		625 x 125		825 x 125		1025 x 125		1225 x 125			
m ³ /h	l/s		0°	30°	0°	30°	0°	30°	0°	30°	0°	30°	0°	30°	0°	30°	
100	28	T	2.9	2.3													
		P _s	1	2													
		L _p	-	-													
150	42	T	3.4	2.6	3.1	2.1											
		P _s	2	3	1	2											
		L _p	-	-	-	-											
200	56	T	4.5	3.4	3.9	2.9	3.5	2.7	3.2	2.4							
		P _s	4	6	2	3	1	3	1	2							
		L _p	-	-	-	-	-	-	-	-							
300	83	T	5.5	4.3	4.7	3.6	4.2	3.2	3.8	3.0	3.5	2.8					
		P _s	10	15	5	8	3	4	2	3	1	2					
		L _p	19	24	13	17	-	-	-	-	-	-					
400	111	T	8.2	6.9	7.3	5.7	6.3	5.0	5.6	4.3	5.0	4.1	4.6	3.6			
		P _s	17	25	10	15	5	8	4	6	2	4	1	2			
		L _p	25	31	20	25	15	20	12	16	-	-	-	-			
500	139	T			8.2	6.7	7.4	6.1	6.8	5.5	6.3	5.0	5.5	4.3	4.8	3.8	
		P _s			16	25	10	14	7	10	3	6	2	3	1	2	
		L _p			25	30	21	25	17	22	-	16	-	-	-	-	
600	167	T					9.4	7.8	8.6	6.8	7.4	5.8	6.4	5.4	5.9	4.8	
		P _s					15	23	11	19	6	8	3	5	2	3	
		L _p					26	31	22	27	15	20	-	14	-	-	
750	208	T							11.1	9.1	9.8	7.6	8.2	6.6	7.5	6.0	
		P _s								18	26	8	13	5	8	3	5
		L _p								28	33	21	25	17	22	13	17
1000	278	T									13.4	10.6	11.3	9.2	10.1	8.0	
		P _s										16	25	10	15	7	10
		L _p										28	33	23	28	19	24
1250	347	T											14.8	12.0	12.9	10.2	
		P _s												16	24	10	15
		L _p												29	34	24	29
1500	417	T													17.0	13.5	
		P _s													17	25	
		L _p													30	35	

Reversible Core Grilles

(R)RTC 2(R)RTC



Selection Example

2RRTC-6/425x175

Spread 0°

Air Volume 111 l/s

Throw 5.6 m

Pressure Drop 4 Pa

Noise Level NR 12

Ceiling Height Throw Correction Factors

Ceiling Height (m)	2.5	2.7	3.0	3.5
Maximum Throw (m)	2.5	3.3	4.5	6.3

Performance Table Nom. H = 175mm

Suitable for round ducts ø450 up to ø1250

RRTC-6 2RRTC-6		Supply / Exhaust															
		325 x 175		425 x 175		525 x 175		625 x 175		825 x 175		1025 x 175		1225 x 175			
m ³ /h	l/s	0°	30°	0°	30°	0°	30°	0°	30°	0°	30°	0°	30°	0°	30°		
200	56	T	3.5	2.7	3.1	2.3											
		P _s	1	3	1	2											
		L _p	-	-	-	-											
300	83	T	4.5	3.3	3.8	3.0	3.5	2.7									
		P _s	3	5	1	3	1	2									
		L _p	-	-	-	-	-	-									
400	111	T	6.1	5.0	5.6	4.4	5.1	4.1	4.9	3.8							
		P _s	8	12	4	6	2	3	1	2							
		L _p	17	21	12	16	-	-	-	-							
500	139	T	7.8	6.1	6.8	5.5	6.3	5.1	5.8	4.5	4.8	3.8					
		P _s	13	20	7	10	4	6	2	4	1	2					
		L _p	22	27	17	22	12	16	-	13	-	-					
600	167	T	9.9	7.9	8.6	6.8	7.7	6.2	7.1	5.4	5.9	4.8	5.2	4.0			
		P _s	21	34	11	19	7	9	4	7	2	3	1	2			
		L _p	32	36	22	30	17	21	13	18	-	-	-	-			
750	208	T			11.1	9.2	10.1	8.2	9.1	7.0	7.5	6.0	6.6	5.4	6.0	5.0	
		P _s			18	26	10	15	7	11	3	5	2	3	1	2	
		L _p			28	33	23	27	19	24	13	17	-	-	-	-	
1000	278	T					14.1	11.5	12.6	9.7	10.1	8.0	8.9	7.1	7.9	6.3	
		P _s					19	29	13	19	7	10	3	5	2	3	
		L _p					31	36	25	30	19	24	14	18	-	14	
1250	347	T							16.1	12.5	12.9	10.2	11.3	9.3	10.5	8.1	
		P _s								23	35	10	15	6	9	3	5
		L _p								33	38	24	29	20	24	15	20
1500	417	T									17.0	13.5	14.7	11.9	13.0	10.4	
		P _s									17	25	11	15	6	10	
		L _p									30	35	25	29	21	26	
2000	556	T											19.6	16.1	17.1	13.4	
		P _s												18	27	11	16
		L _p												30	37	28	33
2500	694	T													20.5	16.9	
		P _s													14	22	
		L _p													35	40	



Reversible Core Grilles (R)RTC 2(R)RTC

Ceiling Height Throw Correction Factors

Ceiling Height (m)	2.5	2.7	3.0	3.5
Maximum Throw (m)	2.5	3.3	4.5	6.3

Selection Example 2RRTC-6/425x225

Spread 30°
Air Volume 139 l/s
Throw 5.0 m
Pressure Drop 6 Pa
Noise Level NR 16

Performance Table Nom. H =225mm Suitable for round ducts ø600 up to ø1500

RRTC-6 2RRTC-6		Supply / Exhaust																	
		325 x 225		425 x 225		525 x 225		625 x 225		825 x 225		1025 x 225		1225 x 225					
m ³ /h	l/s		0°	30°	0°	30°	0°	30°	0°	30°	0°	30°	0°	30°	0°	30°			
200	56	T	3.1	2.3															
		P _s	1	2															
		L _p	-	-															
300	83	T	3.8	3.0	3.5	2.8													
		P _s	2	3	1	2													
		L _p	-	-	-	-													
400	111	T	5.6	4.4	5.0	4.1	4.6	3.6											
		P _s	4	6	2	4	1	2											
		L _p	12	16	-	-	-	-											
500	139	T	6.8	5.5	6.3	5.0	5.5	4.3	4.8	3.8									
		P _s	7	10	3	6	2	3	1	2									
		L _p	17	22	-	16	-	-	-	-									
600	167	T	8.6	6.8	7.4	5.8	6.4	5.4	5.9	4.8	5.5	4.5							
		P _s	11	19	6	8	3	5	2	3	1	2							
		L _p	22	27	15	20	-	14	-	-	-	-							
750	208	T	11.1	9.1	9.8	7.6	8.2	6.6	7.5	6.0	6.7	5.3	6.0	4.7					
		P _s	18	26	8	13	5	8	3	5	2	3	1	2					
		L _p	28	33	21	25	17	22	13	17	-	-	-	-					
1000	278	T			13.4	10.6	11.3	9.2	10.1	8.0	8.9	7.1	8.0	5.9	6.7	5.3			
		P _s			16	25	10	15	7	10	3	5	2	3	1	2			
		L _p			28	33	23	28	19	24	12	17	-	-	-	-			
1250	347	T					14.8	12.0	12.9	10.2	11.3	9.4	10.1	8.1	8.9	7.3			
		P _s					16	24	10	15	4	7	3	5	2	3			
		L _p					29	34	24	29	18	22	11	17	-	-			
1500	417	T							17.0	13.5	14.4	12.0	12.9	10.5	11.4	9.1			
		P _s								17	25	9	12	5	8	4	6		
		L _p								30	35	23	28	18	23	13	19		
2000	556	T											18.0	15.1	16.3	13.4	14.5	11.7	
		P _s												16	24	10	16	6	10
		L _p												31	35	25	30	22	27
2500	694	T													19.4	16.1	17.4	14.1	
		P _s													16	24	10	15	
		L _p													31	36	28	32	
3000	833	T															20.5	16.8	
		P _s																16	25
		L _p																34	39