

# Fire rated transfer grilles



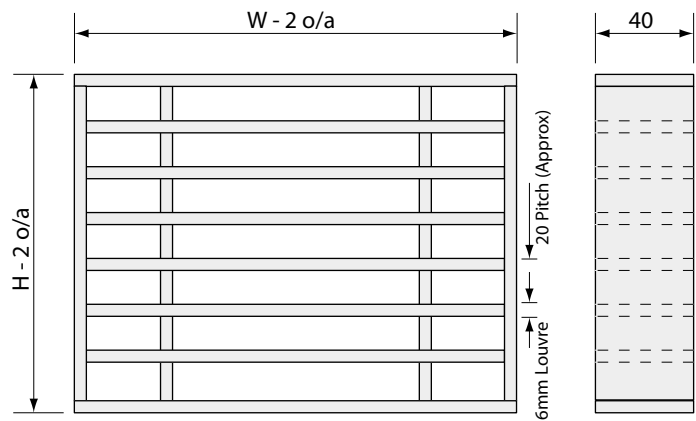
## WFV WFVG

### Introduction

The Waterloo fire rated ventilators are suitable for 1 hour rated doors and partitions. The units, which satisfy BS 476 Part 8, incorporate intumescent elements which expand and carbonise when exposed to temperatures in excess of 150°C, thereby sealing off the ventilation opening. The ventilators may be beaded directly into the door/partition opening or covered by optional steel grilles to suit aesthetic requirements.

Tested and rated in accordance with BS 476 Part 8. Certificate number TRADA IT 245 WRCSI 37354.

WFV units are constructed from hollow PVC extrusions enclosing PALUSOL 210 wire reinforced intumescent media. The extrusions are retained in a horizontal louvre pattern by reinforced vertical members and an enclosing frame system.



### Product Description

WFV Core only fire rated ventilator

WFVG Fire rated ventilator complete with 2 matching steel grilles

Note: Special assemblies using standard Waterloo aluminium grilles are available for partition arrangements

### Features

- 1 hour fire rating to BS 476 Part 8
- Available in 5 standard sizes
- Easy to install
- Attractive appearance
- Available as core only
- Available with covering steel grilles
- Suitable for door and partition mounting
- Special assemblies available for partitions incorporating standard Waterloo grilles

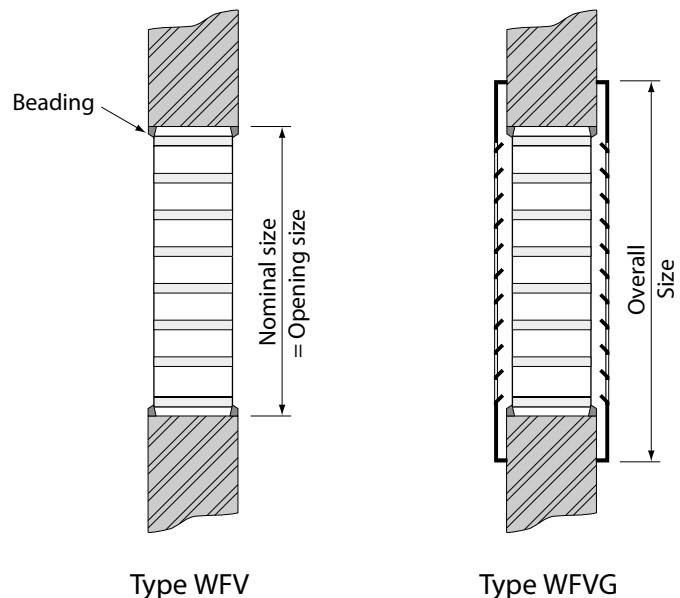
### Finishes

WFV - Silver PVC

Grilles - Stove enamel gloss white

### Sizes

Width (W) and height (H) are nominal opening sizes



### Authority

Tested and Rated in accordance with BS 476 Part 8. Certificate Numbers TRADA IT 245 WRCSI 37354.

### Installation

WFV cores should be fitted into a cleanly cut aperture with a maximum gap of 5mm around the frames; gaps larger than this should be filled with intumescent paste. The cores may be retained by screwing through the stack holes provided, or by using a bead frame. If supplied, the pressed steel cover grilles should be screw fixed through the frame holes provided.

### Order Example

WFVG/300/300/Gloss White

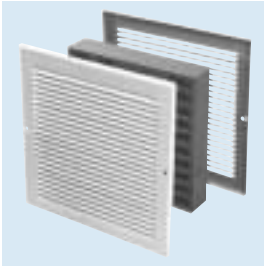
Type    
 Nominal width    
 Nominal height    
 Finish (If applicable)

Nominal Size mm W x H	Overall Size mm	Weight kg	Free Area Measured WFV
150 x 150	185 x 185	0.45	56%
200 x 200	235 x 235	0.80	58%
300 x 300	340 x 340	1.80	59%
600 x 300	645 x 340	3.60	60%
600 x 600	645 x 645	7.20	61%



# Fire rated transfer grilles

## WFV WFVG



### Selection Criteria

Performance is based on a 'room to room' application with the WFV mounted in a partition or door.

$Q$  = Air flow rate through the ventilator at the stated differential pressure.

$\Delta P$  (Differential pressure) = static pressure difference across the assembly.

NR Level = Noise Rating — Peak level on NR curves based on sound power level ref.  $10^{-12}W$  less 8dB room absorption.

### Selection Example

Select a WFV unit to handle 300 l/s with a maximum pressure loss of 25 Pa and Noise level of NR 30. Enter graph at  $Q = 300$  l/s and extend upwards until a standard size may be selected which satisfies pressure and noise level specified.

Size 300 x 300 WFV selected:  
 Pressure Drop 22 Pa  
 NR Level = NR 24

### Performance graph

